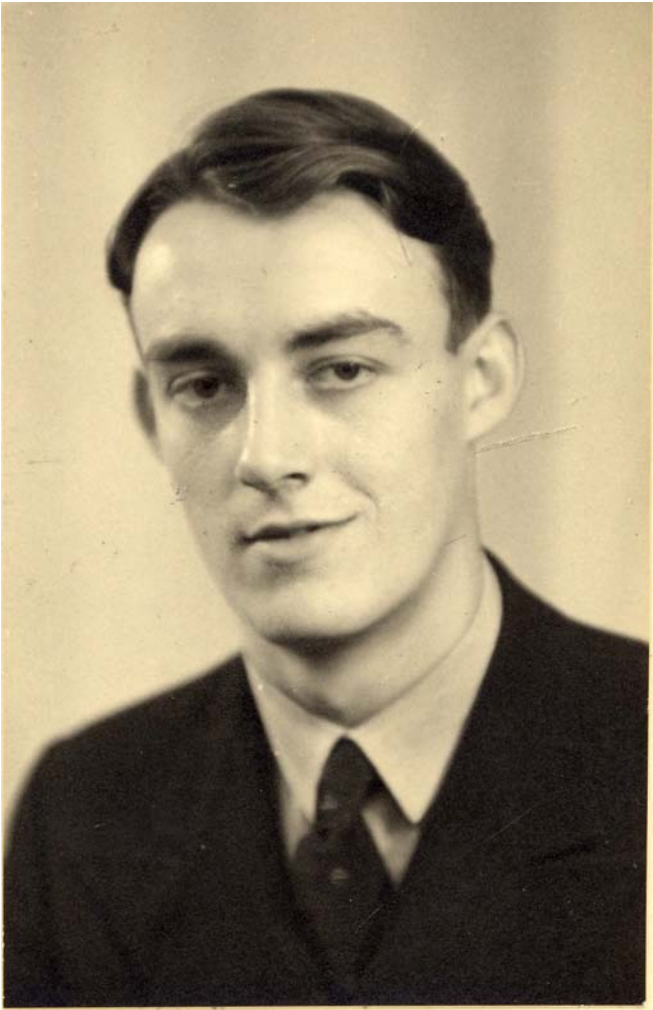


# Ladefoged and Phonetics

Jenny Ladefoged

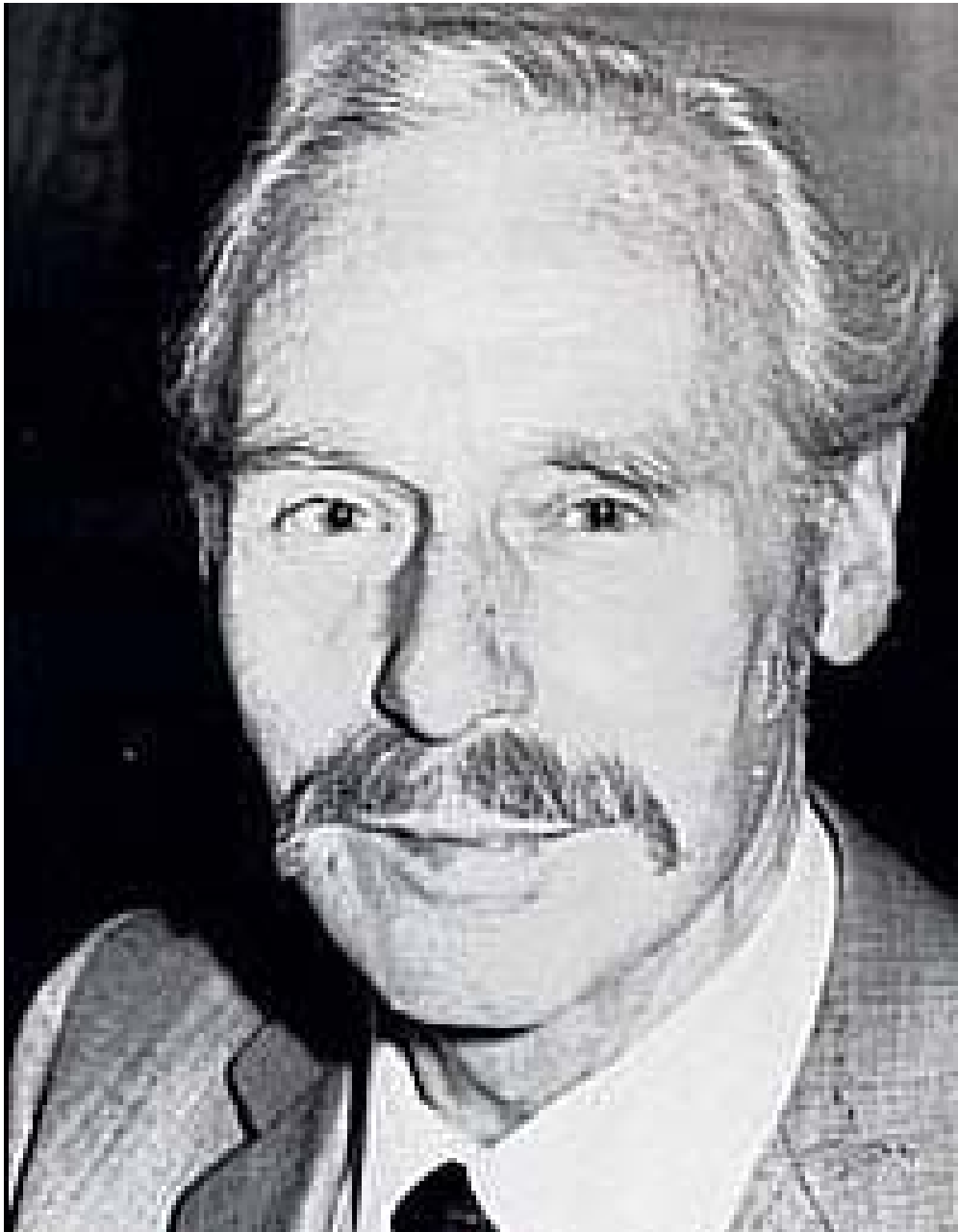


Peter when I met  
him



Mary and David Abercrombie in the center





Daniel Jones

- Psychology
- Acoustics
- Physiology

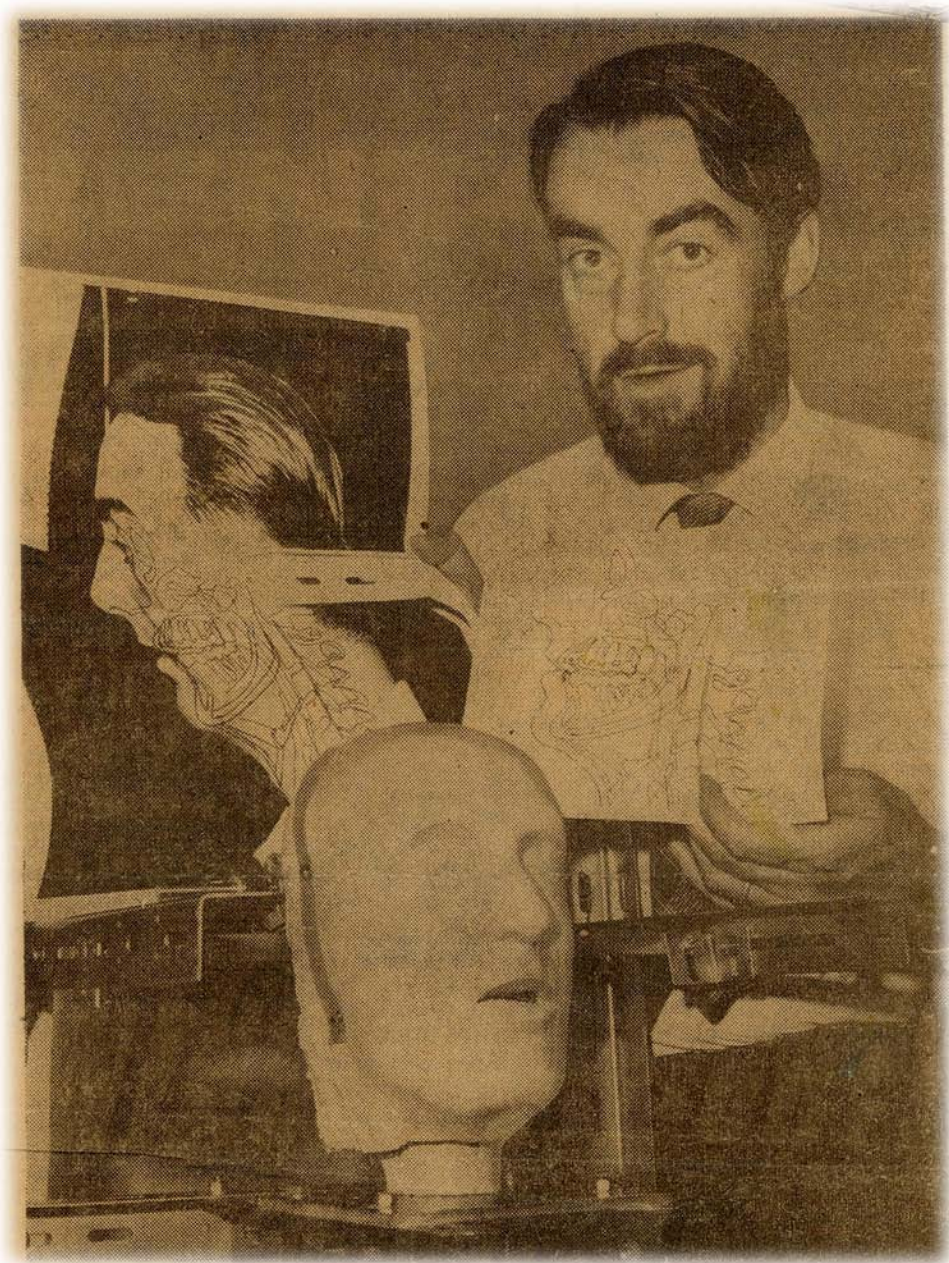




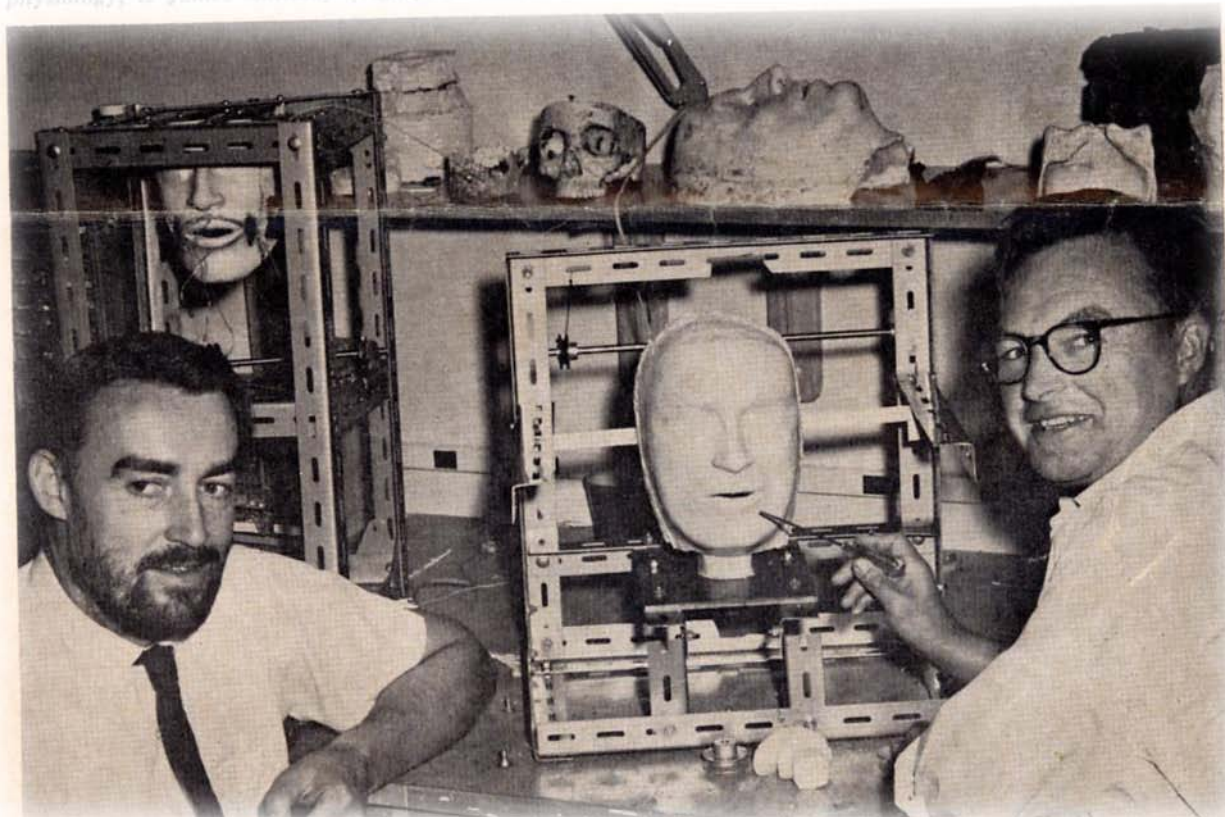
The best food  
between Nigeria  
and Ghana,  
French!



To prove I was there



An experiment  
that failed



James Anthony, from Edinburgh



—Herald-Examiner Photo

Vicky Fromkin, his first student  
moulding a tongue



Peter maintains the phonetics was lousy!

# Ruth Glick, Uganda



# Vicky Fromkin, John Ohala

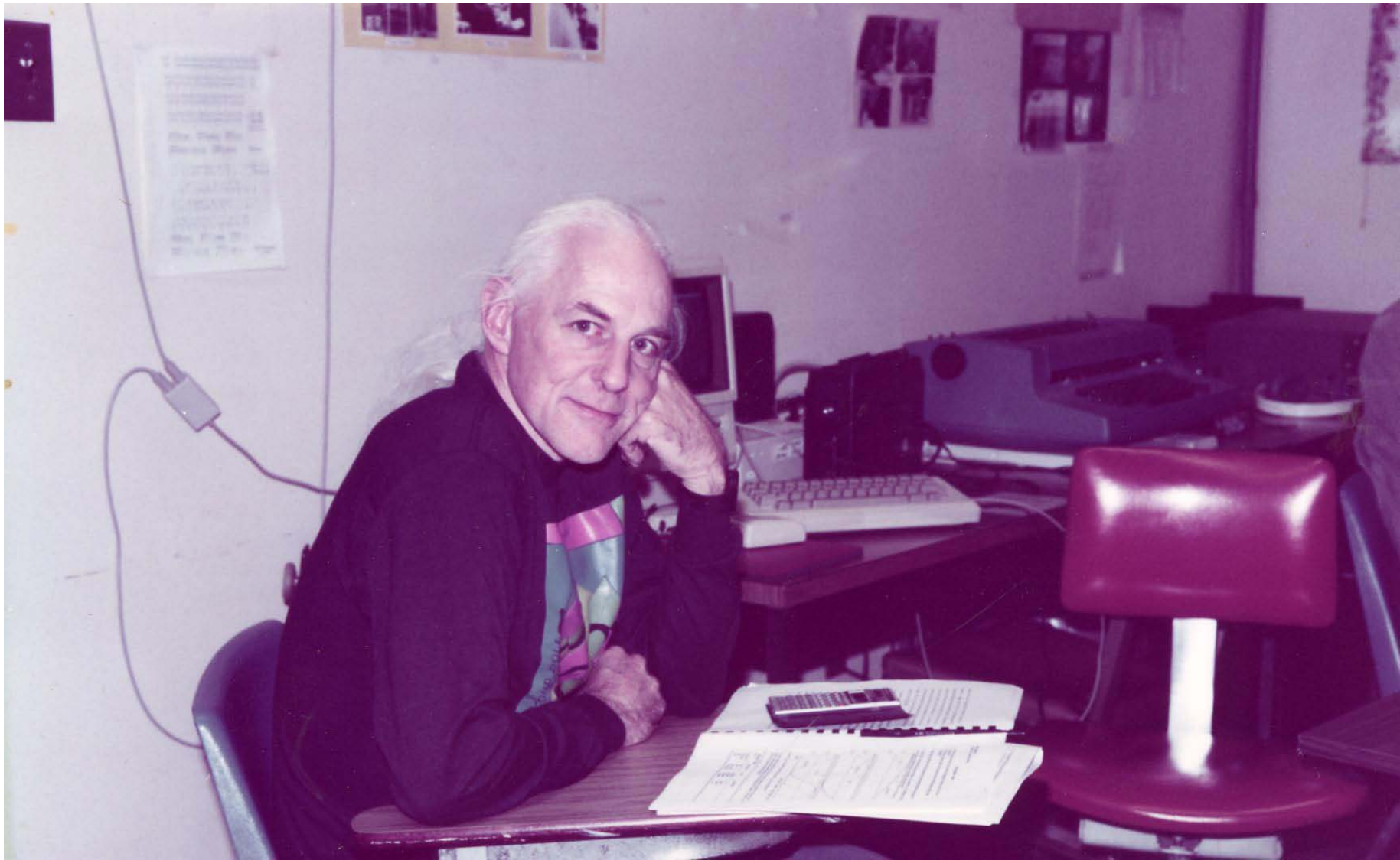


students





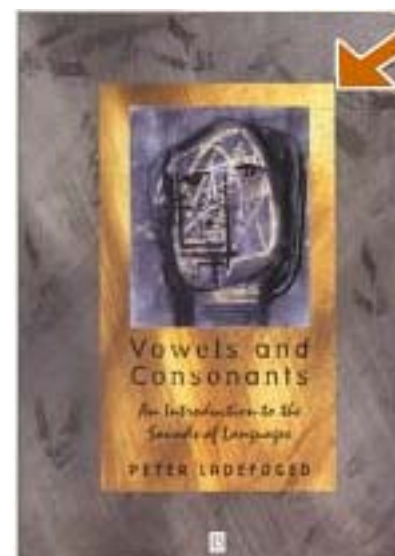
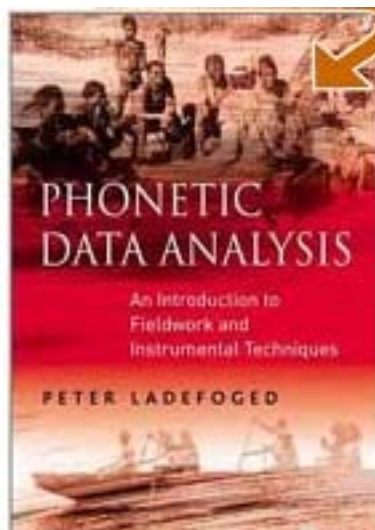
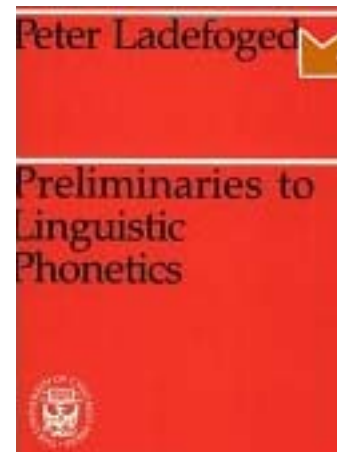
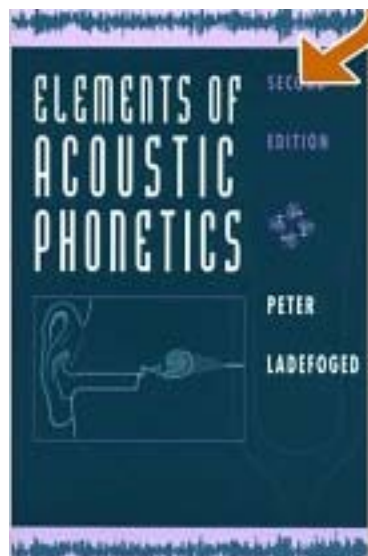
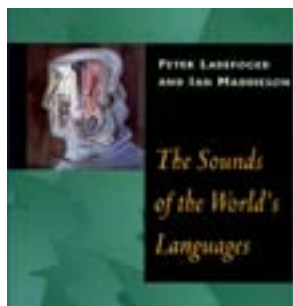
Bruce, Keith and Ian



Ian Maddieson



Peter's preferred writing position



## Books

# IPA the Kiel conference

## THE INTERNATIONAL PHONETIC ALPHABET (revised to 1993, corrected 1996)

### CONSONANTS (PULMONIC)

	Bilabial	Labiodental	Dental	Alveolar	Postalveolar	Retroflex	Palatal	Velar	Uvular	Pharyngeal	Glottal
Plosive	p b			t d		ʈ ɖ	c ɟ	k ɡ	q ɢ		ʔ
Nasal	m	ɱ		n		ɳ	ɲ	ŋ	ɴ		
Trill	ʙ			r					ʀ		
Tap or Flap				ɾ		ɽ					
Fricative	ɸ β	f v	θ ð	s z	ʃ ʒ	ʂ ʐ	ç ʝ	x ɣ	χ ʁ	ħ ʕ	h ɦ
Lateral fricative				ɬ ɮ							
Approximant		ʋ		ɹ		ɻ	j	ɰ			
Lateral approximant				l		ɭ	ʎ	ʟ			

Where symbols appear in pairs, the one to the right represents a voiced consonant. Shaded areas denote articulations judged impossible.

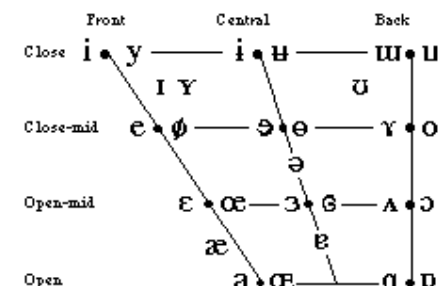
### CONSONANTS (NON-PULMONIC)

Clicks	Voiced implosives	Ejectives
ʘ Bilabial	ɓ Bilabial	ʼ Examples
ǀ Dental	ɗ Dental/alveolar	pʼ Bilabial
ǃ Postalveolar	f Dental	tʼ Dental/alveolar
ǂ Postalveolar	ɡ Velar	kʼ Velar
ǁ Alveolar lateral	ɠ Dental	sʼ Alveolar fricative

### OTHER SYMBOLS

ʌ Voiceless bilabial/alveolar fricative	ɸ Voiceless bilabial fricative
ʋ Voiced bilabial/alveolar approximant	ɹ Alveolar lateral flap
ɰ Voiced bilabial/palatal approximant	ɻ Simultaneous ʃ and ʂ
ħ Voiceless epiglottal fricative	
ʕ Voiced epiglottal fricative	Affricates and double articulations can be represented by two symbols joined by a tie bar, if necessary.
ʡ Epiglottal plosive	

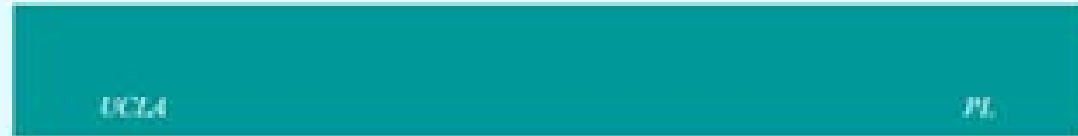
### VOWELS



Where symbols appear in pairs, the one to the right represents a rounded vowel.

Click on any part of this chart to see the symbols and hear the sounds

# Web page



## UCLA Phonetics Lab Data

[Index of languages](#) [Index of sounds](#)

[Map index](#)

This site also contains material relevant to

[\*A Course in Phonetics 5 th. Ed\*](#)

Peter Ladefoged

Thomson/ Wadsworth Publishers

[\*Vowels and Consonants, 2nd. Ed\*](#)

Peter Ladefoged

Blackwell Publishers

[Additional material, not organized for teaching purposes, is available in the UCLA Phonetics Archive.](#)

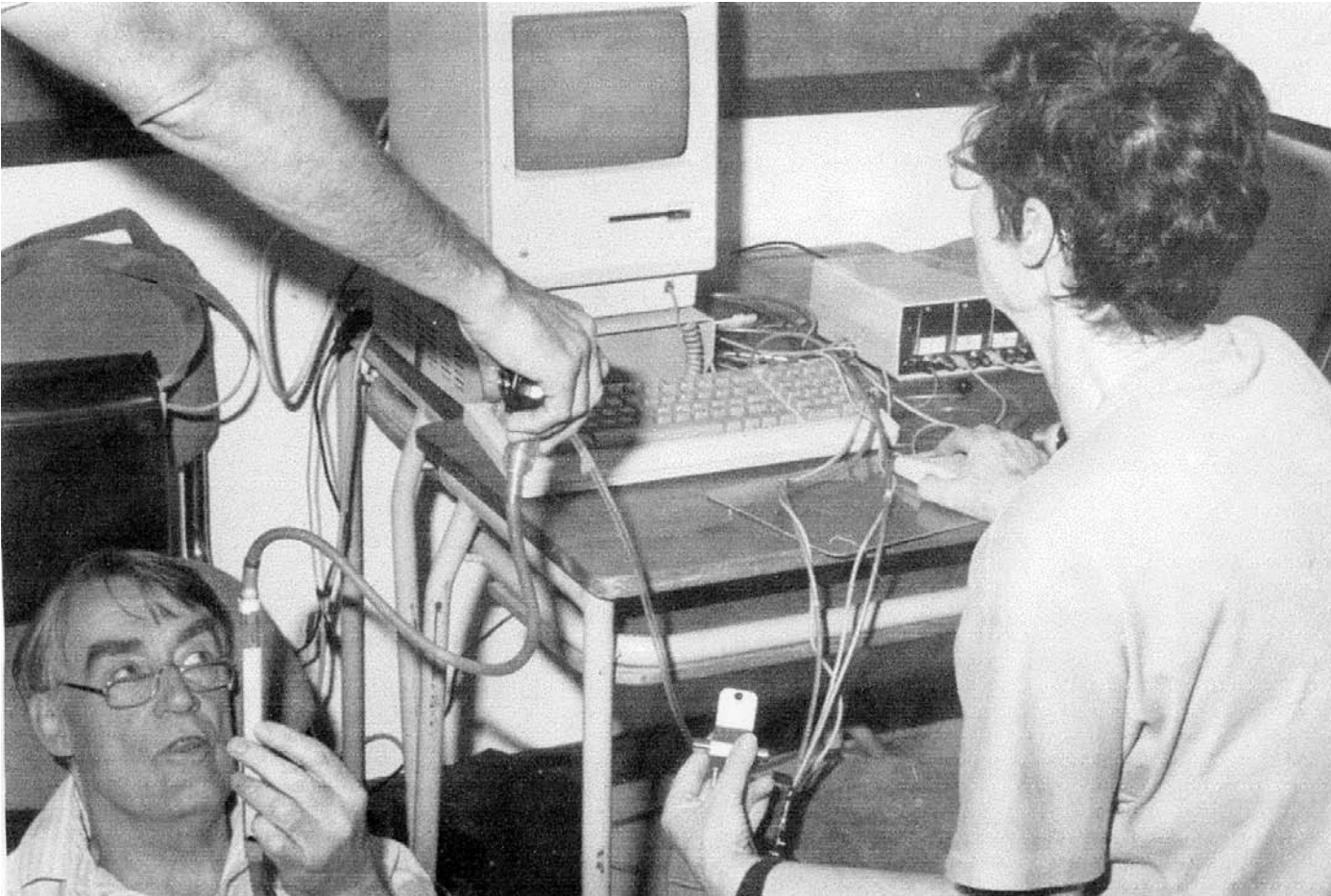
# Kalahari field work







Windhoek, Namibia



Calibrating a pressure mask



- Toda, the nicest informants I have met



- Dani Byrd and Pat Keating



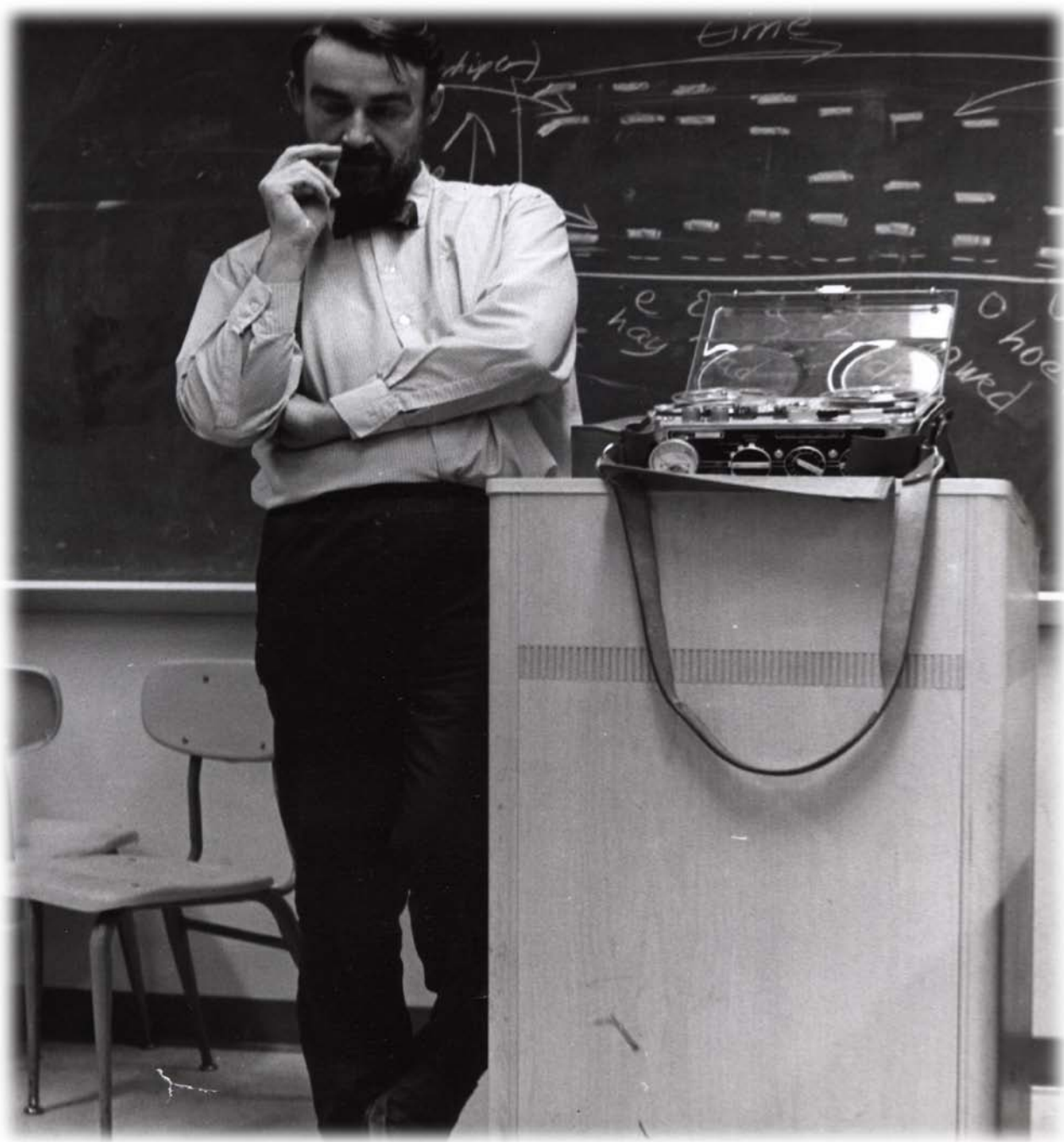
Teaching in Yemen

研究所











Old and new lab members at our golden wedding



His favorite picture